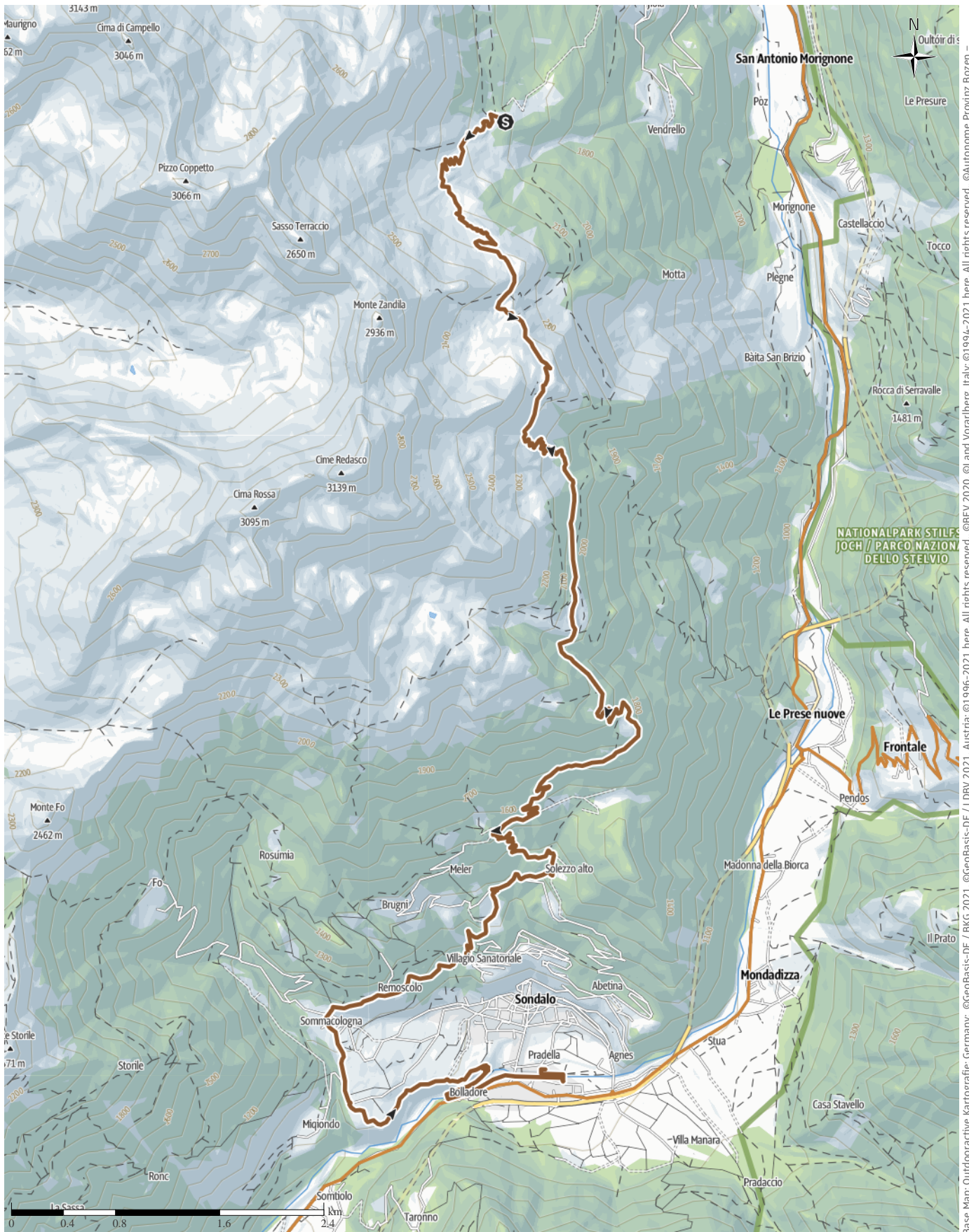


# Bormio 360 Mountain Bike- Stage 5 - Mineral Trail

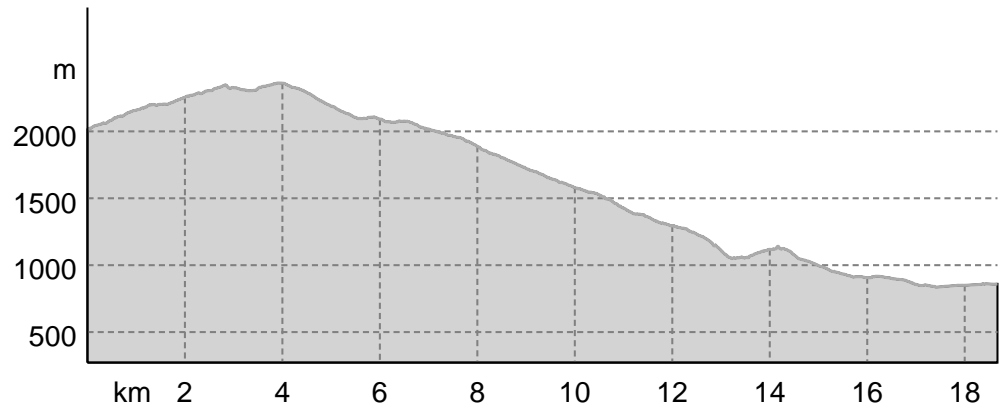
← 18.7 km | ⌚ 2:35 h | ▲ 509 m | ▼ 1,666 m | Difficulty difficult



Base Map: Outdooractive Kartografie; Germany: ©GeoBasis-DE / LDBV 2021, Austria: ©1996-2021 here. All rights reserved., ©BBEV 2020, ©Land Vorarlberg, Italy: ©1994-2021 here. All rights reserved., ©Autonome Provinz Bozen - Südtirol - Abteilung Natur, Landschaft und Raumentwicklung, ©Cartago S.R.L. Base Map: outdooractive Cartography, ©OpenStreetMap (www.openstreetmap.org)

# Bormio 360 Mountain Bike- Stage 5 - Mineral Trail

## Elevation profile



### route data

#### Mountain Biking

Distance	↔ 18.7 km
Duration	🕒 2:35 h
Ascent	⬆ 509 m
Descent	⬇ 1666 m

Difficulty **difficult**

Stamina **●●●●●●**

Technique **S2 / 5**

Altitude **2,361 m**  
**836 m**

### Best time of year

JAN	FEB	MAR
APR	MAY	JUN
JUL	AUG	SEP
OCT	NOV	DEC

### Ratings

Authors	●●●●●
Experience	●●●●●
Landscape	●●●●●

### More route data

Properties	
Scenic	Cultural/historical interest
Flora	



#### Comunità Montana Alta Valtellina

Update: March 26, 2024

Source  
**Valtellina Outdoor**  
 23100 Sondrio  
 Sondrio  
[info@valtellinaoutdoor.it](mailto:info@valtellinaoutdoor.it)  
<https://www.valtellinaoutdoor.it>

Don Zaccaria, Sondalo's provost since 1878 and a lover of history, loved to search for clues in the area that would reveal traces of the past; thanks to him, findings of considerable mineralogical value were found, so much so that he claimed that Sondalo contains such a wealth of rocks that it could provide a complete treatise on mineralogy. On the path are:

anatase, apatite, tourmaline, zircon, native arsenic and quartz, extracted in the still active industrial quarry. Along the trail, one can also observe various sanatorium structures that, combined with the forest environment, form an extraordinary architectural and landscape design, making the slope a unique cultural site in Italy and Europe.

Don Zaccaria, Sondalo's parish priest from 1878, and passionate about history, loved to search the territory for clues that would reveal traces of the past. Thanks to him, finds of considerable mineralogical value were discovered. So many that he declared Sondalo contains such a wealth of rocks as to be able to provide a complete treatise on mineralogy. Along the trail there are: Anatase, Apatite, Tourmaline, Zircon, native Arsenic, and quartz, which are extracted in an active industrial quarry. Along the way, it will also be possible to observe various sanatoriums, which combined with the forest environment, form an extraordinary architectural and landscape design, making the hillside

## Bormio 360 Mountain Bike- Stage 5 - Mineral Trail

a unique cultural area in Italy and Europe.

### Turn-by-turn directions

#### Starting point / trailhead

Alpe Zandilla

#### Coordinates:

DD: 46.394183, 10.324650

DMS: 46°23'39.1"N 10°19'28.7"E

UTM: 32T 601839 5138698

w3w: ///prods.commented.campsites

#### Point of arrival

Sondalo Palazzetto dello sport

#### Turn-by-turn directions

Alpe Zandilla - Palazzetto Sport Sondalo

### Takeaway route for iPhone and Android



Scan QR code, save this route offline, share with friends and more...

#### Website

<https://www.valtellinaoutdoor.it/s/3vskrZ>